

Ver. 24/English

COMPANY PROFILE



TOTAL SALES	₩ 3.4T
Employee	9,400
Country	12
Production Site	49
R&D Center	17



TOTAL SALES	€ 20B
Employee	109,900
Country	29
Production Site	183
R&D Center	65



Joint ventures in Korea



VPH International

Distribution / Export

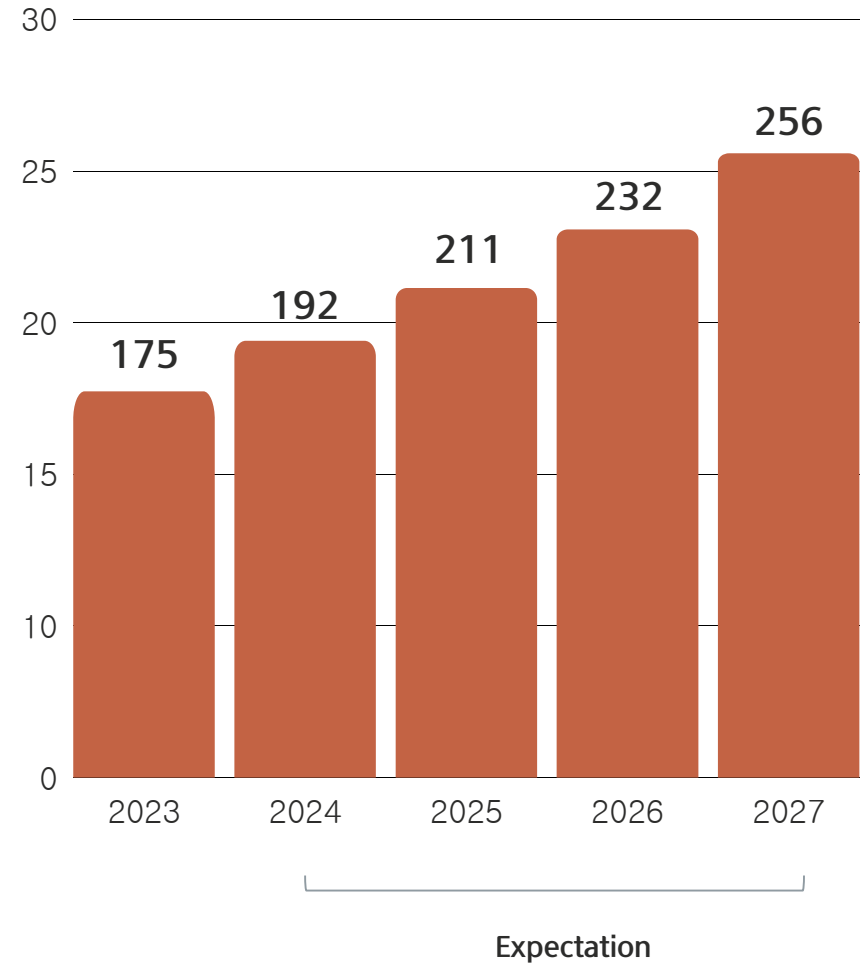
Network



85 Countries / 209 Customers

Sales

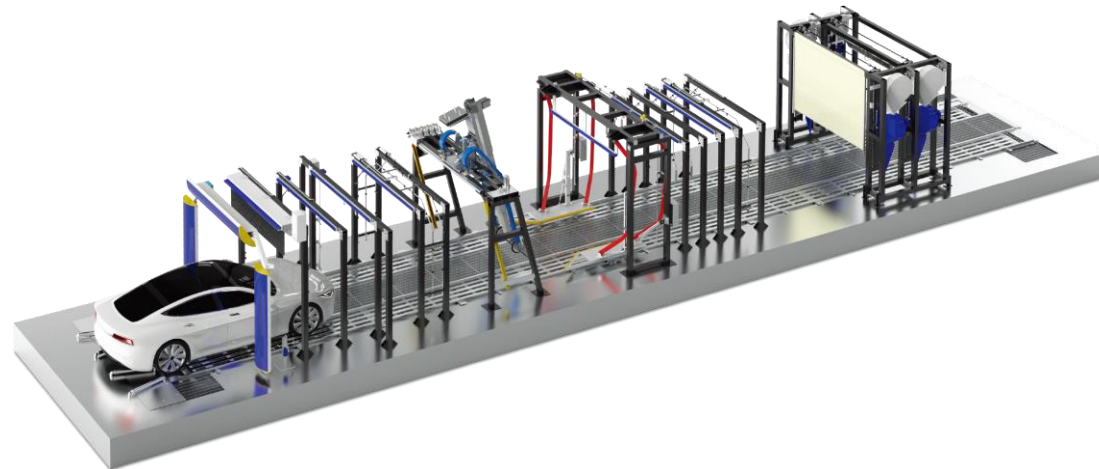
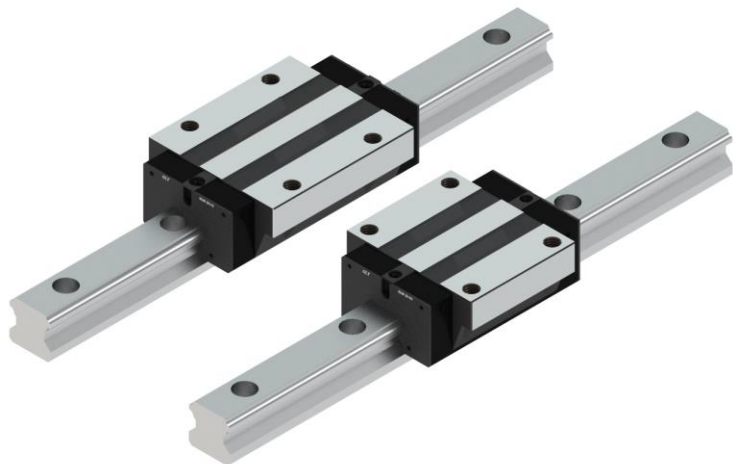
Unit : \$ Million



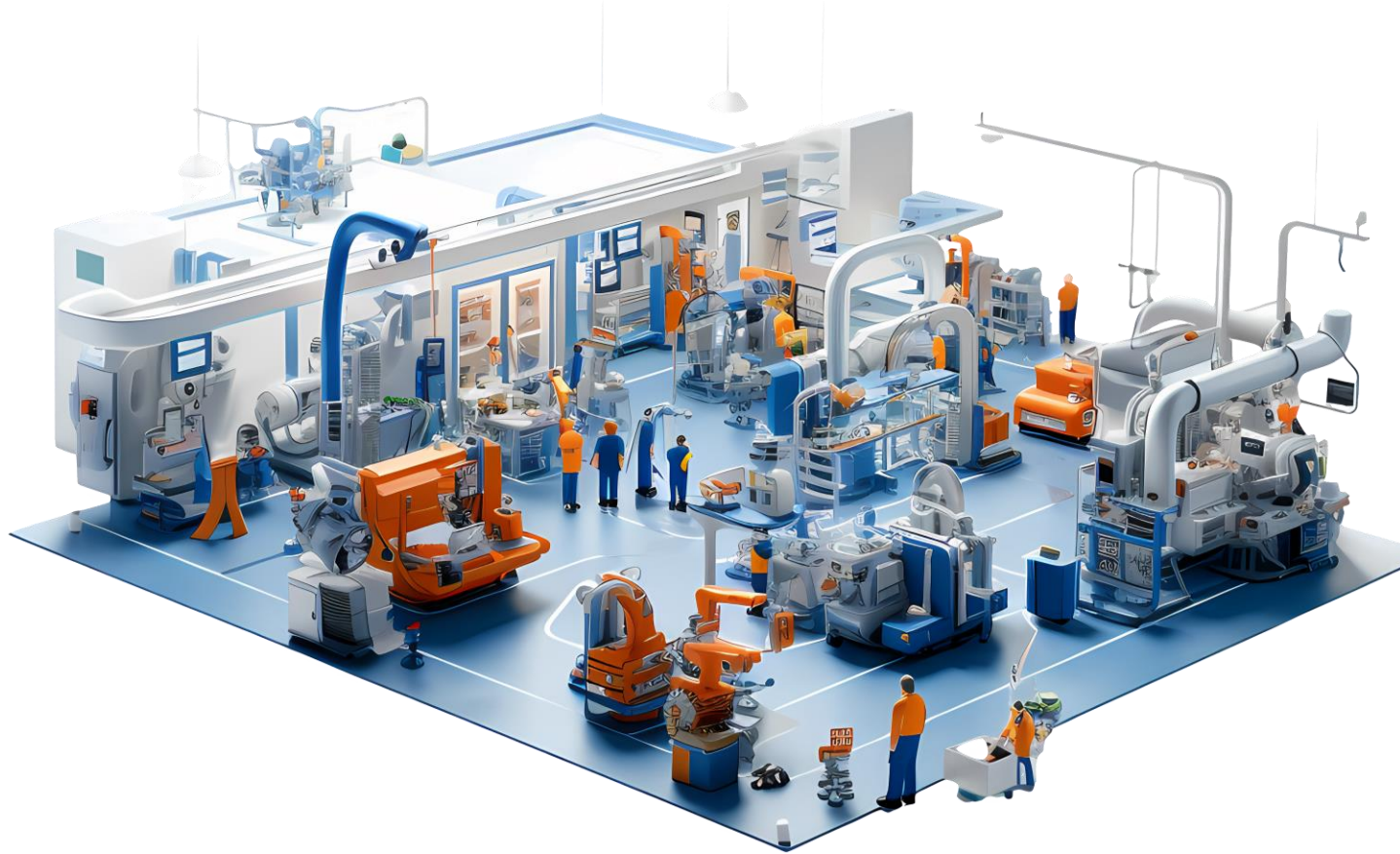
Total Business



AUTO PARTS AFTERMARKET / AUTOMATION MACHINE PARTS / TRACTOR / UTV / CAR WASH MACHINE / TURBO BLOWER



AUTOMATION MACHINE PARTS



SOLUTION for..

- Automated production line
- Smart factory line
- Maintenance
- MRO

(Purchasing agency for a variety of high-quality products.)

RANGE



LM Guide



Ball Screw



LM Guide Actuator



Ball Spline



Guide/Linear Bush



THK



HIWIN

NSK

SKF



YASKAWA

SIEMENS



Sumitomo



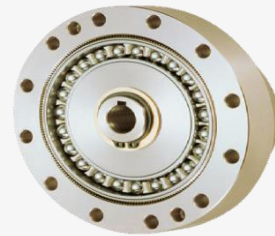
APEX DYNAMICS, INC.



Crossed Roller Bearing



Other Linear Guide



Harmonic Bearing



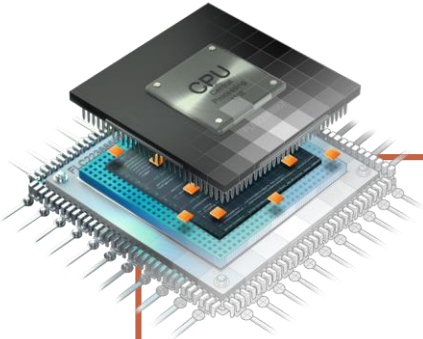
Planetary Gear



Precision Bearings

APPLIED TO MAJOR INDUSTRIES IN KOREA

Semiconductor



Secondary Battery



Defense



SAMSUNG



POSCO

HYUNDAI



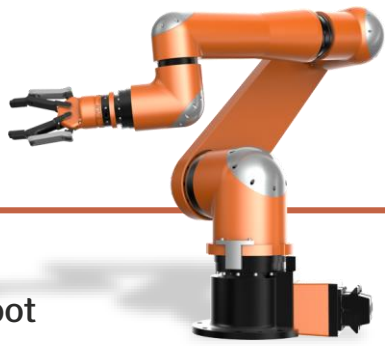
DOOSAN



Display



Robot



Automobile





ABOUT US

Name : Valeo Pyeong Hwa International Co., Ltd.

Founded : 2008.05

Business : Auto parts distribution (aftermarket)

Products : AUTO PARTS AFTERMARKET / AUTOMATION MACHINE PARTS /
TRACTOR / UTV / CAR WASH MACHINE / TURBO BLOWER

Head office: Address : Room No.902, Hanaro Bldg., 25, Insadong 5-gil,
Jongno-gu, Seoul, Korea, 03162
Tel : (02) 734-3730

Branch : Address : 26 Seongjunonggongdanji-gil, Seonju-eup,
Seongju-gun, Gyeongsangbuk-do, Korea, 40033
Tel : (054) 930-0542

Website : www.koreavaleo.com
www.phcvaleo-webcat.com

E mail : mp-vphi@vph.com
hoatran.kotra@gmail.com
dldusgh01@kotra.or.kr

Affiliates : PHC Group / www.globalphc.com
Valeo Pyeong Hwa / www.vph.co.kr
Valeo Kapec / www.kapecvaleo.com
Pyeong Hwa Automotive / www.phakr.com



PHC Valeo