

3View.Com Inc

Company Profile



- www.e3view.com 
- Tel : +82 31-776-0677
- Fax : +82 31-776-0673



INDEX



01 About us

02 History

03 Organizational chart

04 Business scope

05 Product

06 Certification

07 Global Partner

08 Project

3View.Com Inc

“Smart factory” We’ve been working on technology development for the last 20 years for this.

We present a new smart factory solution that combines cutting-edge technologies such as MES, APS, AI Monitoring system, and IoT.



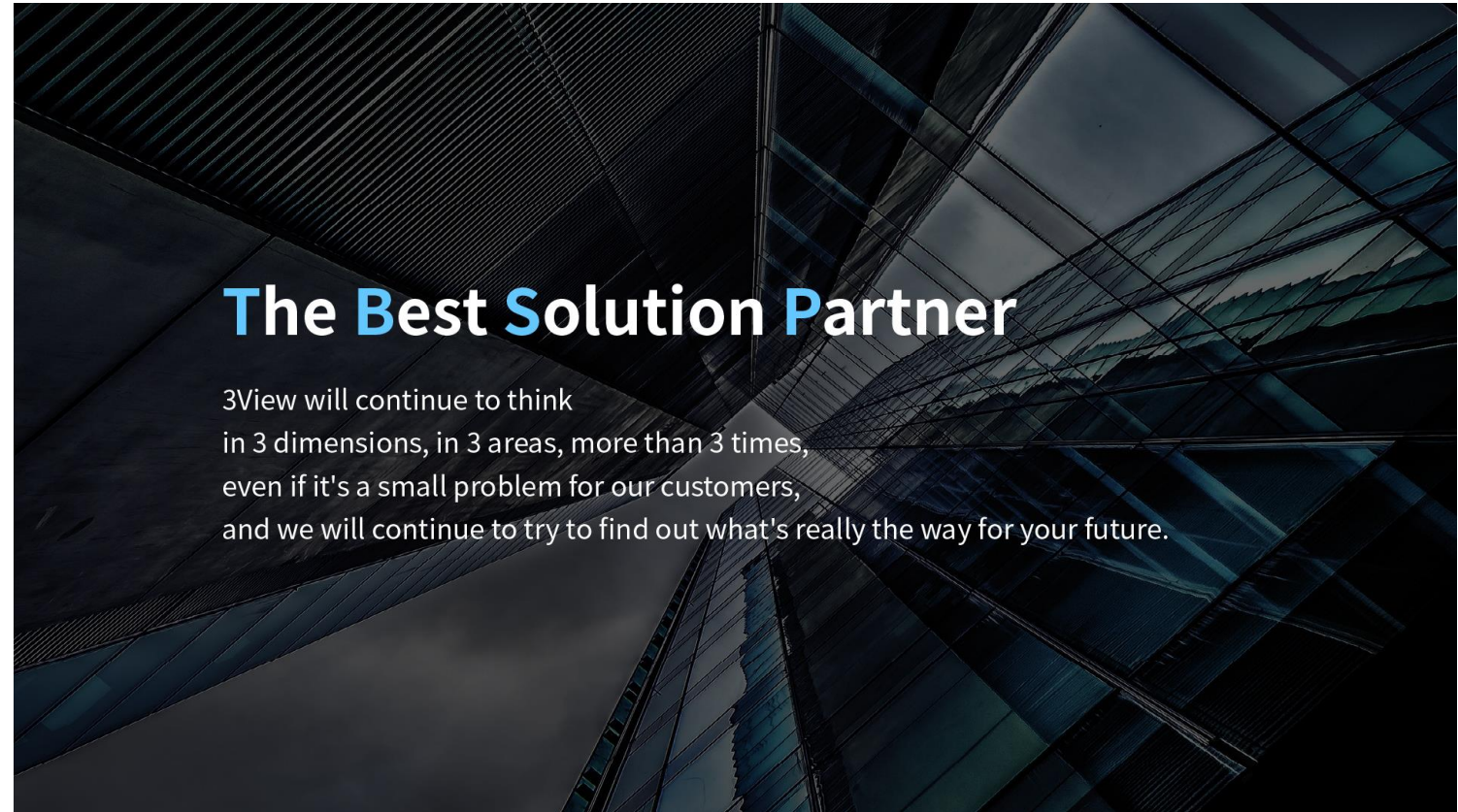
3 perspectives



3 dimensions



3 times



The Best Solution Partner

3View will continue to think in 3 dimensions, in 3 areas, more than 3 times, even if it's a small problem for our customers, and we will continue to try to find out what's really the way for your future.

01

3View

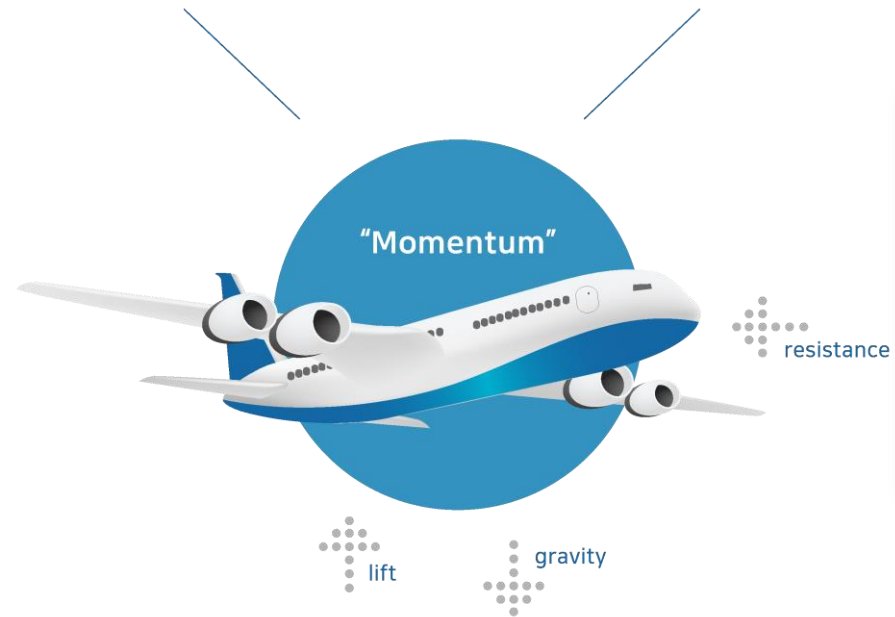
- About us
- History
- Organizational chart
- Business scope
- Product
- Certification
- Global Partner
- Project

Mission

Smart innovation for our customers

Vision

The bridge for your smart factory



- Location : Biz1109, 124, Sagimakgol-ro, Jungwon-gu, Seongnam-si, Gyeonggi-do, 13207, Republic of Korea
- President : HeeMyung Kim (Henry)
- Date of establishment : February 2000
- Phone: +82 31- 776-0677
- FAX : +82 31-776-0673
- Homepage : www.e3view.com
- E-mail : info@e3view.com

02

3View

- About us
- History
- Organizational chart
- Business scope
- Product
- Certification
- Global Partner
- Project

3View History

3View does not rest on its laurels and is constantly evolving to improve customer satisfaction.



2000~2005 Establishment &Pioneering

2000.
Feb. 3View established

2002.
Jan. Relocation of business

2005.
Jun. Registered as a startup in Korea
May. Establishment of a corporate research center



2006~2010 Business Incubation

2007.
May. Establishment of POP system for KGK, Japan
Mar. Joint brand usage agreement with Asahi Sunac

2008.
Feb. Establishment of POP system for Anderson Mfg

2009.
Jun. Launch of MV300
Jan. Launch of MV500

2010.
Jan. Use of our internal groupware



2011~ Business Growth

2011.
Oct. Relocation of business site to expansion
Aug. Launch of PIS-150 (PIS; Parts Inspection System)

2012.
Sep. Completed development of PIS-100, -050HV, -200R
Jan. Launch of Process Monitoring System MV800i

2013.
Jun. Establishment of MES-POP integrated system for PT. Sugin (Kanban system)

2014. Completed development of Web-QC

2015. Completed development of T-MES

2016.
Oct. Completed development of Smart POP
Sep. Establishment of a corporation in China

2017. Building and upgrading a representative smart factory

2018.
Jun. Launch of ePlanView™ (APS; Advanced Planning & Scheduling)
Jan. Launch of FactoryView™ (MES; Manufacturing Execution System)

2019.

Jul. Launch of IoT solution ThingsView
Jun. Launch of MV880, MV580
May. Selected as a technology development project (Korea)
(Pattern-based quality prediction system using deep learning Paas)

2020.

Nov. Selected as a smart factory technology project (Korea)
(Cloud-based data platform technology)
Oct. Launch of MV550
Mar. Establishment of MES for PT. Garuda

2022.

Dec. Selected as a smart factory technology project (Korea)
Nov. Establishment of MES and MRP for CPSK
Oct. Establishment of MES for GSM METAL
Sep. Register as a Microsoft Partner
Jun. Establishment of MES for GSBOLT

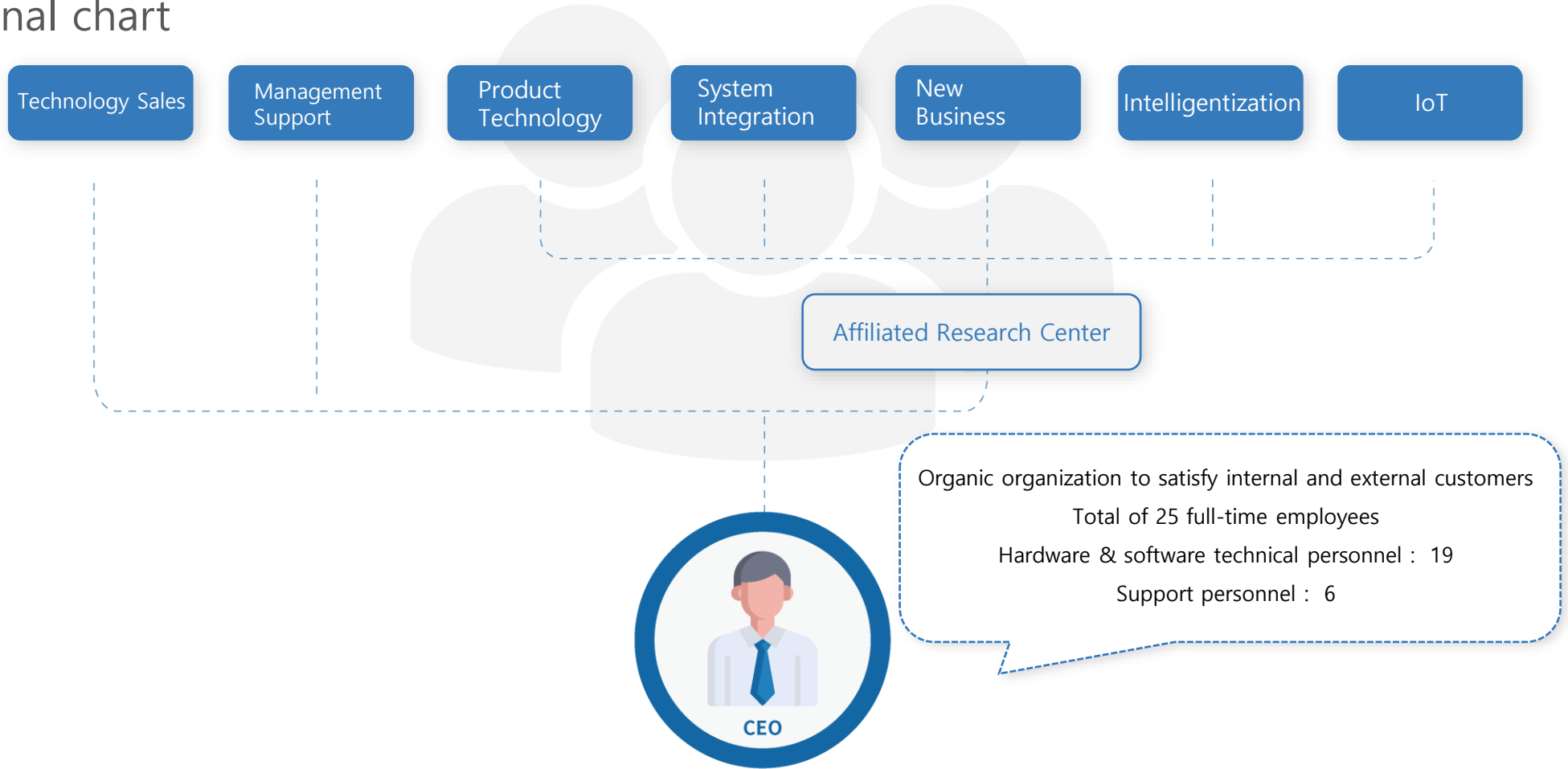
2023.

Mar. Development of ESG-responsive Energy Monitoring Solution
Jun. Launch of SetView, a manufacturing knowledge information digital conversion solution

03

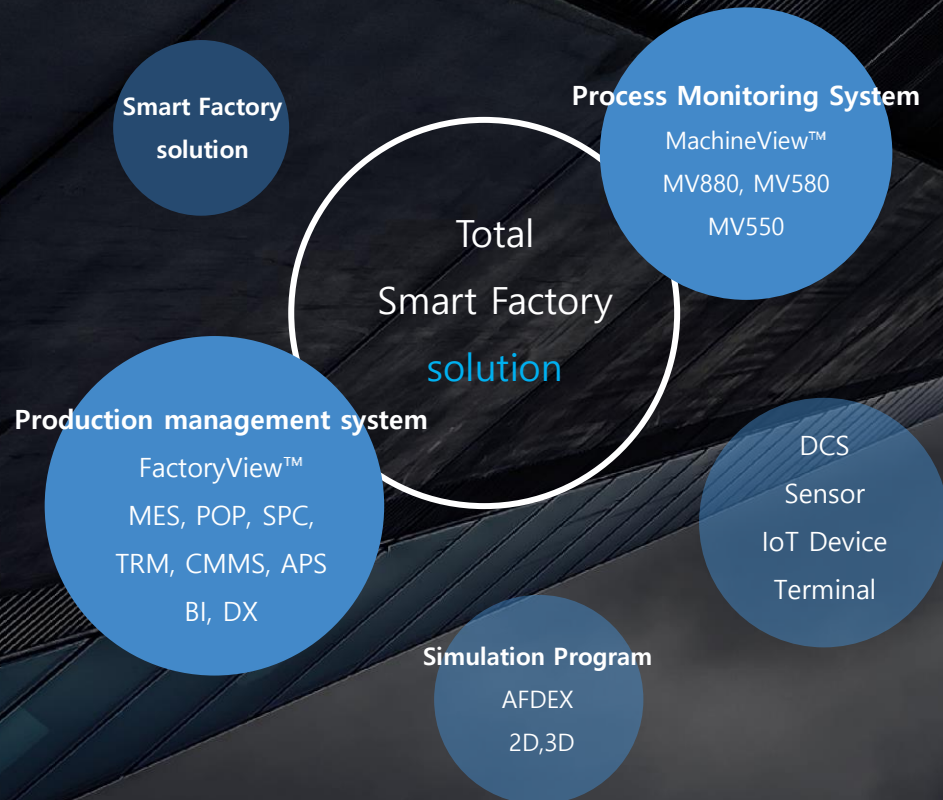
Organizational chart

- About us
- History
- Organizational chart
- Business scope
- Product
- Certification
- Global Partner
- Project



Organic organization to satisfy internal and external customers
Total of 25 full-time employees
Hardware & software technical personnel : 19
Support personnel : 6

Business Scope



01

Production Management System (FactoryView™)

Manufacturing Execution System(MES), Point Of Production(POP), Statistical Process Control(SPC), Tool Resource Management(TRM), Computerized Maintenance Management System(CMMS), Advanced Planning & Scheduling(ePlanView™), Business Intelligence(BI)...

System that directs, manages, and supervises all production-related processes

02

Process Monitoring System (MachineView™)

Smart monitoring system that monitors the machine's forming force in real time and immediately controls the machine when an abnormality is detected to block defects and prevent tool damage.

03

Smart Factory Solution

Real-time control solution that integrates machines and processes to monitor in real time and utilizes artificial intelligence technology.

Providing production optimization solutions using sensor networks for load, pressure, vibration, temperature, and speed, big data collection technology, and AI algorithms.

04

DCS (Data Collect System) & Sensor / IoT Device / Terminal

Hardware device that collects data accurately and reliably and is optimized for various environments. MES terminal MT-100/ST-50, IoT Device Z-20, Digital measuring instrument interface QV-30

05

Forming analysis simulation software(AFDEX)

AFDEX(Advisor for metal Forming process Design Expert)

AFDEX is a general-purpose metal forming simulator, which meets the following requirements for intelligent bulk-metal- forming (BMF) simulation (BMFS)

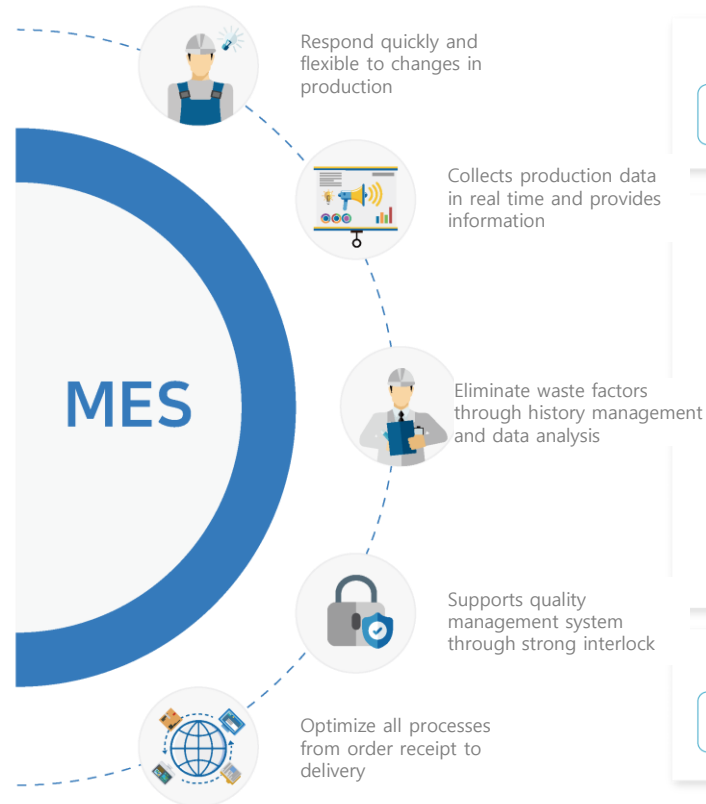
05

Product

- About us
- History
- Organizational chart
- Business scope
- Product
- Certification
- Global Partner
- Project

FactoryView™

It is an integrated Manufacturing Execution System (MES) that has been verified by more than 100 domestic and overseas companies to identify the real-time situation of the entire manufacturing process, including production management, quality management, logistics management, tool management, and automation, centered on the site, and operate it organically to eliminate waste and create value.



System interface It can be integrated with various systems such as ERP, SCM, QMS, PLM, etc. Share master data and real time data.

ERP	SCM	PLM	Enterprise BI	QMS
-----	-----	-----	---------------	-----

Main Function				Expansion
BOM / BOT	Purchase order	Machine daily inspection	Shipping mgmt.	AI, bigdata
Routing/Dispatching	warehouse	Machine maintenance	Sales mgmt.	Dashboard
Planning & Scheduling	SPC Analysis	Parts mgmt.	Work calendar	Analysis & report
Work order	Failure log claim	Standard document mgmt.	Drawings/Working Standards	Alarm
Traceability	Report mgmt.	Tool in and out mgmt.	OEE	KPI
Lot management	Instrument mgmt.	Tool life mgmt.	Interlock	Mobile interface

Factory Automation

Bigdata platform	Machine monitoring	IIoT connection	Remote control	HMI / SCADA
------------------	--------------------	-----------------	----------------	-------------

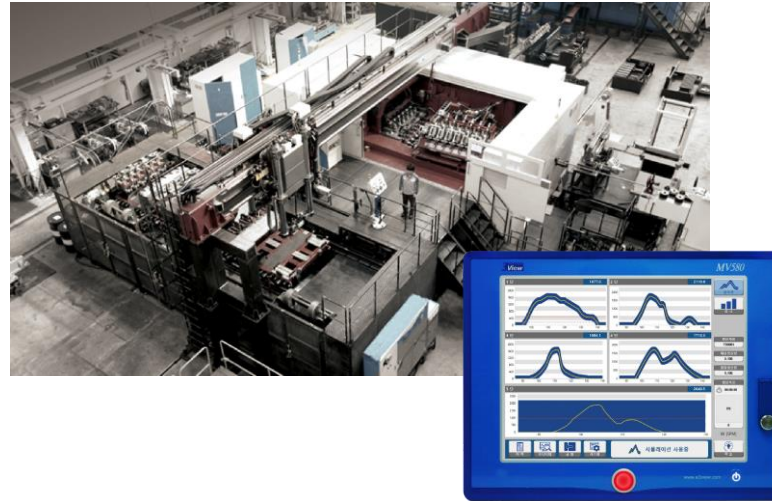
05

Product

- About us
- History
- Organizational chart
- Business scope
- Product
- Certification
- Global Partner
- Project

MachineView™

It is a real-time monitoring system that analyzes the physical quantity (Forming force) when the machine is forming and stops the machine immediately if an abnormal signal that deviates from the control standard is detected.



01

Machine learning continuously collects startup conditions, and optimize monitoring conditions according to real-time changes to detect defects.

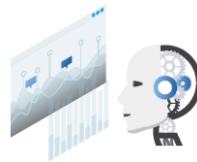
02

Improve machine efficiency by providing essential functions for production such as tool life, machine startup, defect detection, and unmanned operation.

03

It can be connected with MES/POP system for building Smart Factory, and it collects/analyzes monitoring data to provide optimal feedback.

AI Monitoring



- AI Learning
- Visualize production
- AI determines the situation and takes action

Powerful functions



- Tool life management
- Defect history/cause analysis
- Real-time data collection
- Remote status check/instruction
- MES/POP system expansion

Cost savings



- Unattended production
- Reduce quality inspection costs
- Improved tool life
- Reduce machine downtime

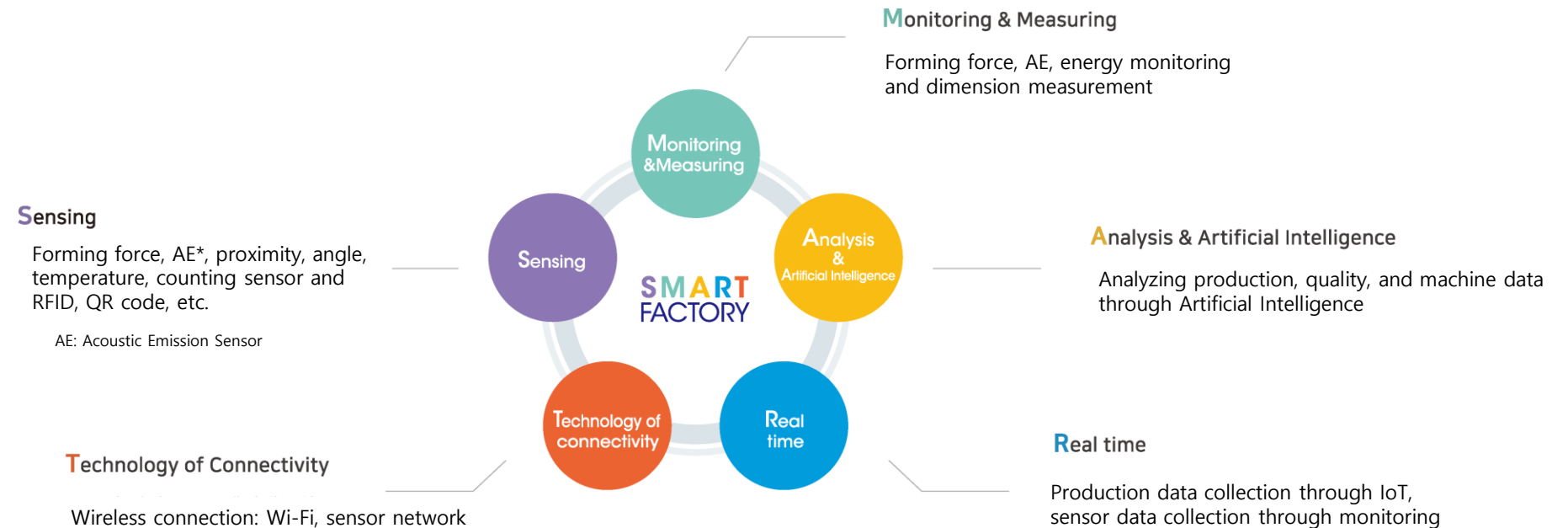
05

Product

- About us
- History
- Organizational chart
- Business scope
- Product
- Certification
- Global Partner
- Project

Smart Factory Solution

It is a cutting-edge intelligent factory that has achieved advanced digitalization and organic connection through information and communication technologies such as IoT, AI, and Cloud, and realizes profit generation by responding innovatively and flexibly to situations at the production site.



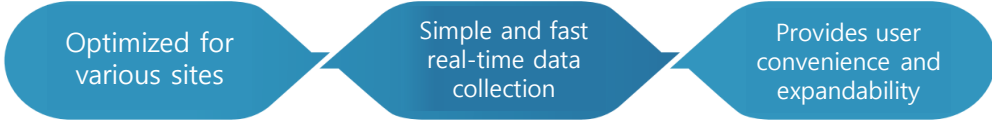
05

Product

- About us
- History
- Organizational chart
- Business scope
- Product
- Certification
- Global Partner
- Project

DCS(Data Collect System) & Sensor / IoT Device / Terminal

Hardware device that collects data accurately and stably and is optimized for various manufacturing environments
MES terminal MT-100/ST-50, IoT Device Z-20, digital measuring instrument interface QV-30



MT-100
Multi Terminal



ST-50
Single Terminal

IoT Device **Z-20**



SPC Interface **QV-50**



05

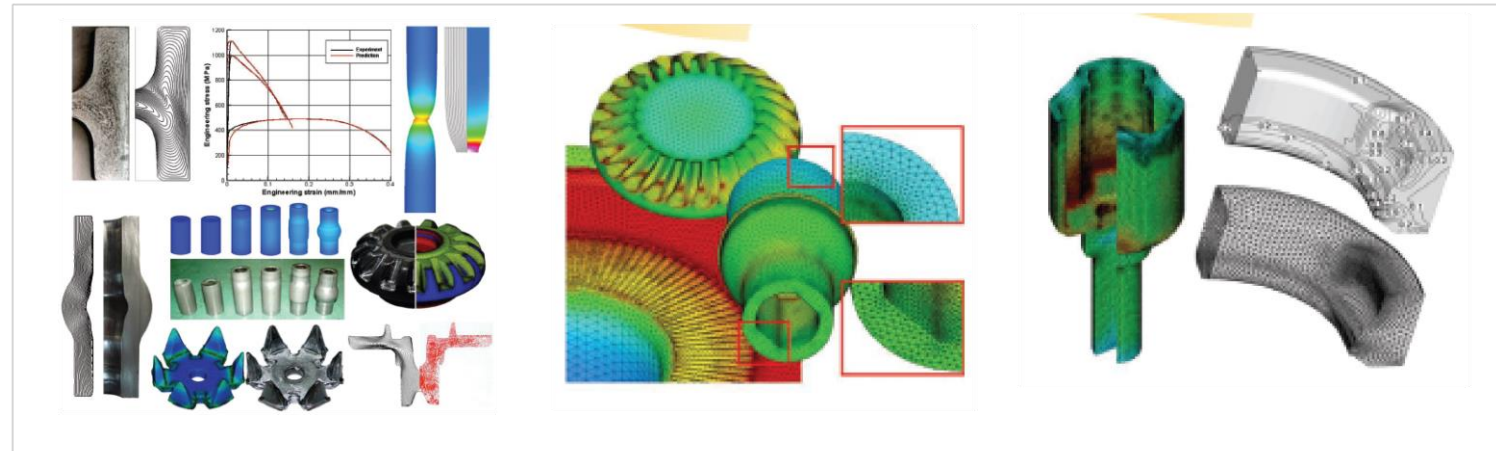
Product

- About us
- History
- Organizational chart
- Business scope
- Product
- Certification
- Global Partner
- Project

Simulation Software AFDEX 2D / 3D

Adviser for metal Forming process Design EXpert

- ✓ Easy and simple setup
- ✓ Functional design that is easy to use even for beginners
- ✓ Adaptive and Intelligent mesh generation



06

Certification

- About us
- History
- Organizational chart
- Business scope
- Product
- Certification
- Global Partner
- Project



CE certificate MV8001



Export Promising Company



Quality Certificate (ISO14001)



Quality Certificate (ISO9001)



Korean Patent No. 0453699



CE certificate MV800



Korean Patent No. 1242507



Technology Innovation Company



New Technology Certificate



Venture Company Certificate



R&D Center Certificate



CE certificate MV580

07

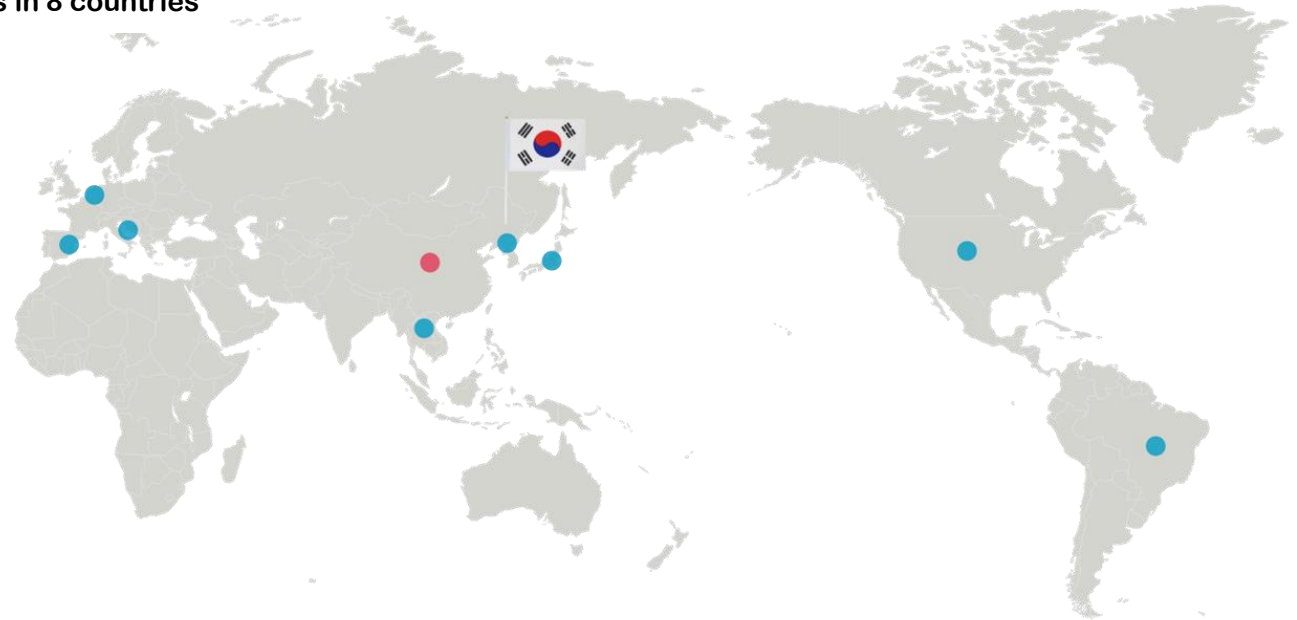
Global Partner Growing with approximately 350 customers around the world

- About us
- History
- Organizational chart
- Business scope
- Product
- Certification
- Global Partner
- Project

Establishing a global network around the world, collaborating with over 20 equipment manufacturers (partners) and agencies

Chinese corporation and agencies in 8 countries

- ,Japan
- ,Thailand
- ,Turkey
- ,Spain
- ,Switzerland
- ,USA
- ,Brazil



07

Global Partner Growing with approximately 350 customers around the world

- About us
- History
- Organizational chart
- Business scope
- Product
- Certification
- Global Partner
- Project



08

Project

- About us
- History
- Organizational chart
- Business scope
- Product
- Certification
- Global Partner
- Project

Best Practices

source. Daegu Smart Factory Casebook

24
www.goodshinyang.com



(주)신양정밀
도입시스템 APS 시스템 구축 레벨 수준 level 2






<p>대표이사 전영두</p> <p>대표전화 053-384-5111</p>	<p>주소 대구광역시 달서구 성서서로 19길 7(월암동)</p> <p>사업기간 2019. 05. 24. ~ 2020. 01. 31. (8개월)</p>	<p>주요 생산품 자동차, 건설 하드웨어 부품</p> <p>구축비용 총사업비 : 1.38억 원 (지원금 : 0.69억 원)</p>
----------------------------------------------------------------	---------------------------------------------------------------------------------------------------------------	----------------------------------------------------------------------------------------------------

25
www.goodshinyang.com

**APS(Advanced Planning & Scheduling) 시스템
도입으로 제조 시스템 최적화 도입**

하드웨어 부품 제조의 선두이자 기술력을 바탕으로 한 주식회사 신양정밀은 자동차 부품 및 건설용 부품, 방산용 부품 등을 제조 생산하는 40년 역력의 제조 업체로, 자동차 부품 중 헤드램프 부품의 하드웨어 부품인 AIM'G BOLT, MT'G BOLT, SCREW, PIVOT 등을 전국 제조 자동차의 약 65%를 제조하는 하드웨어 전문 부품 제조 업체이다. 하드웨어 부품은 자동차 및 건설용 등의 부품에 기초가 되는 부품으로, 상호 간의 연결 및 조절 등을 구성하는 산업의 기초가 되는 부품이다. 신양정밀의 제조 부품은 단품의 수가 상당히 많은 점유를 차지하고 있으며, 고객사 또한 많은 업체를 보유하는 관계로 발주수량의 취합 및 한정된 제조 설비로의 생산 계획 수립 등의 여러가지 문제점을 항상 안고서 작업을 진행하여야 했다. 이에 (주)신양정밀에서는 여러 가지 문제점인 다품종 및 다고객사를 만족시키기 위한 시스템적인 여러가지 방법을 모색하여 급변 스마트 공장 고도화 사업에 참여 업무를 추진하게 되었다. 고객사의 다품종 저비용을 추구하여 이를 전산에 등록하며, 이를 통한 제한된 제조설비의 생산 일정을 전산에 통하여 수립한다.

기존 생산계획 수립 방식은 생산계획의 정확성이 낮으며 또한 다고객사의 발주현황의 취합 시 변동 사항이 발생되면 모든 생산 계획 및 외주 일정 등을 변동해야 하므로 최적화된 APS 시스템 도입이 시급하여 추진했다. 기존 시스템의 MES-POP 시스템에 연동하여 APS 시스템을 적용하고 이를 통한 고객사 발주 관리 및 생산 계획 수립, 자체적인 자재 확보 및 외주 공정 일정 계획 수립 등을 체계적으로 수행한다. 한물물 통한 관리가 아니라 시뮬레이션을 통한 사전 검토 형태로 여러 번의 반복 시험 및 다 방향의 계획 수립이 가능한 장점이 있다.

시스템 구축에 따른 고객사 납기 관련 업무 대응이 향상되었으며, 생산 계획의 일단위, 주단위, 월단위의 수립을 체계화하여 기존 교체 및 생산 직접 로스를 절감하는 효과를 가질 수 있게 되었다. 더 나아가 생산성의 효율적인 향상 및 기업의 신뢰도, 인지도 상승에도 큰 기여를 하게 되었다.






01 스마트공장 구축 현장
02/03/04 스마트공장 관제실에서 일하는 모습
05 시스템 개요
06 (주)신양정밀 본사 전경

08

Major project performance (Domestic)

- About us
- History
- Organizational chart
- Business scope
- Product
- Certification
- Global Partner
- **Project**

Starting with POP in 2003, focusing on primary and secondary parts suppliers of automobile companies, we have been considering ways to satisfy the QCD pursued by automobile companies, including MES, QMS, and APS, based on 4M standards and are aiming for a **Dynamically Optimized Factory.**

Project Name	Customer Name	Year
MES – MRP	C**	2022
POP-SCADA	P**	2021
MES - APS	S**	2019
MES - APS	D**	2019
MES - APS	Y**	2018
MES – MRP	I**	2019
Metal Mask Managing system	P**	2020
MES - APS	O**	2019

08

Major project performance (Overseas)

- About us
- History
- Organizational chart
- Business scope
- Product
- Certification
- Global Partner
- **Project**

Starting with POP in 2003, focusing on primary and secondary parts suppliers of automobile companies, we have been considering ways to satisfy the QCD pursued by automobile companies, including MES, QMS, and APS, based on 4M standards and are aiming for a **Dynamically Optimized Factory.**

Project Name	Customer Name	Year
MES	China	2022
POP	Japan	2012
POP-BI	Japan	2020
POP-BI	Brazil	2019
POP-Kanban	Indonesia	2012
MES	Indonesia	2020
POP	USA	2015

Thank you