

Mobilebase



DAISHIN



Information and Communications, Ltd

Company Profile

# Company Overview

## Mobilebase

### Company

DaiShin  
Information&Communications  
KOSDAQ Listed in 1995

### CEO

Jae-Won, LEE  
Hyun-Taek, CHOI

### Founded

8.28.1987  
(35 years)

### Sales Revenue

USD 152M

### Capital

US\$ 15M

### Employee

669 people  
(2023.12)

### Address

#### HQ

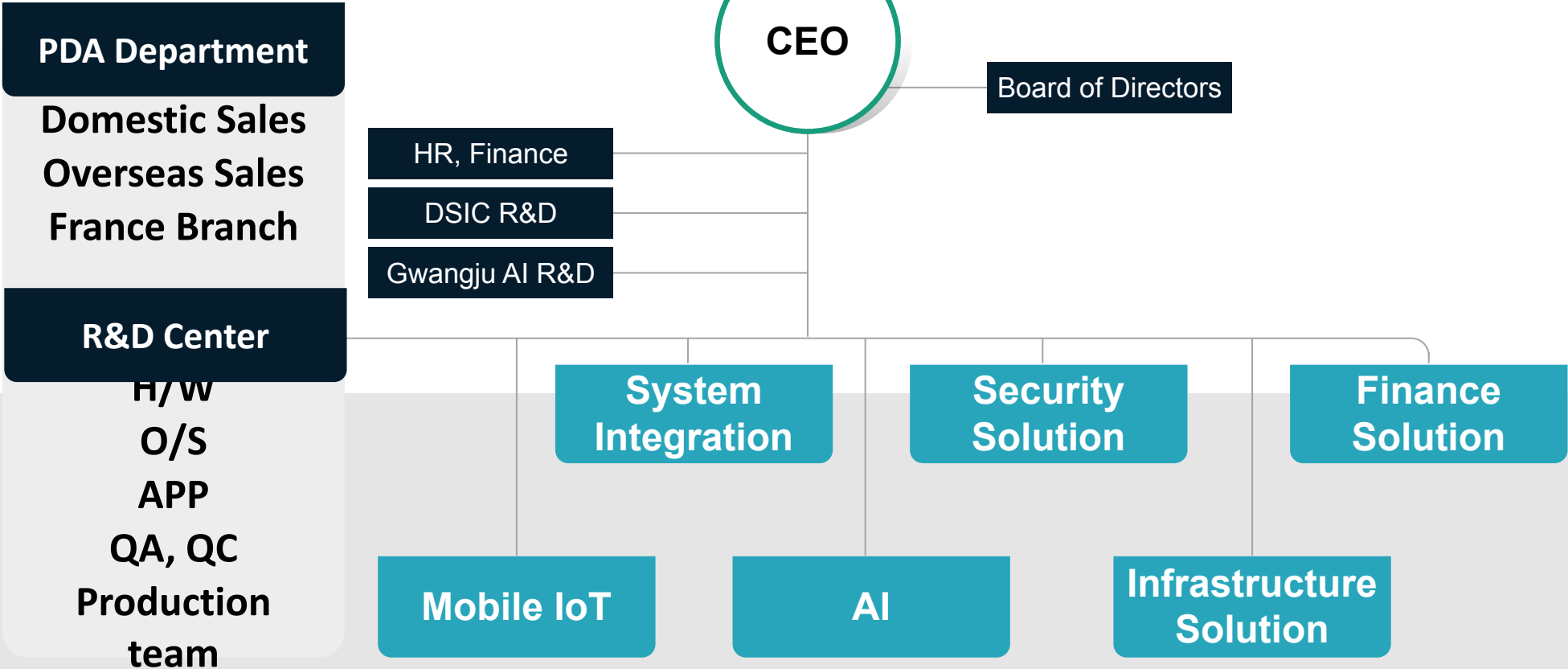
6F, 169-16, Gasan digital 2-ro,  
Geumchun-gu, Seoul, Republic of Korea

### Business

SI (System Integration), NI (Network Integration)  
Cloud and consulting, Data center,  
Industrial PDA, Smart Grid, AI

# Organization Chart

**Mobilebase**  
MOBILE DATA CAPTURE FOR EVERYDAY PROFESSIONAL



# Manufacturing Base

## Factory Information



Location	Hwaseong-si, Gyeonggi-do, Republic of Korea (18528)
Capacity	30,000 units in a month

## Equipment



BTU



NXT



MT8852



MT8000A



SPI



MPM



Agilent 8960



CMU200



Separator



XP-243



AOI



CMW500



MT8821C

# Milestones

1987	Established DSIC (DaiShin Information & Communications Co., Ltd.)
1995	Listed in KOSDAQ (20180)
2006	Established Mobile Computer R&D Center
2007	MB3000, MB7000 Launching
2010	DS3 Launching
2013	DS5 Launching / Mobilebase Global Branding Initiation
2015	DS9, DS5-AX Launching
2017	DS2, DS4 Launching
2018	DS6, DS4A Launching
2023	DS90, DS70 Launching

# Rugged Handhelds (Full-touch)



## B50

- Cost-effective
- The thinnest & light-weight
- 2.0GHz Octa-core
- 802.11 ax ready
- AI 2D Imager



## S60S (NEW)

- Ultra-rugged
- Powerful Performance
- Large Capacity Battery
- 2.5W loud speaker



## S60

- Rugged
- Wet / Pen touch mode
- Zebra 2D Imagers (SR)
- 2 scan angles (straight / bent)

	MB50	DS60S	DS60
CPU	Octa-core 2.0GHz	Qualcomm Octa-core 2.2GHz (up to 2.45GHz)	Qualcomm Octa-core 2.2GHz
OS	Android 11	Android 13	Android 10
Memory	4GB / 64GB	4GB / 64GB 6GB / 128GB	4GB / 64GB
Screen (Resolution)	5.45" HD+ (720 x 1440)	5.45" HD+ (720 x 1440)	5" HD (720 x 1280)
Dimension (mm)	156 x 75 x 14.5	157 x 75 x 14.9	154 x 76 x 18.7
Weight (g)	249g	275g	273g
Battery	5,000mAh	5,000mAh 7,000mAh	4,000mAh 6,000mAh
Wireless	802.11 a/b/g/n/ac BT 4.1 4G LTE	802.11 a/b/g/n/ac BT 5.0 4G LTE	802.11 a/b/g/n/ac BT 5.0 4G LTE
Camera	Front : 5MP Rear : 13MP	Front : 5MP Rear : 16MP	Rear : 16MP
NFC	Built-in		
Barcode Scanning	2D Imager	SE4720 (SR) SE4770 (SR) SE55 (Flexible)	SE4710 (SR) SE4770 (SR)
USB	USB Type-C x 1		
Reliability	IP68 1.5m Drop	IP68 2.0m Drop	IP67 1.5m Drop

# Rugged Handhelds (Keypad)



## DS4A

- Compact body
- 27 keys (Numeric)
- Zebra 1D / 2D scan engine
- Suitable for retail shops



## DS50 (NEW)

- Android 13
- 802.11 ac (2x2 MIMO)
- Fast roaming support
- 34 / 54 keys  
(Numeric / Full Alpha-numeric)
- Zebra scan engine  
(SR / XLR)

	DS4A	DS50
<b>CPU</b>	Qualcomm 2.0GHz Octa-core	Qualcomm 2.2GHz Octa-core
<b>OS</b>	Android 10	Android 13
<b>Memory</b>	2GB / 32GB 3GB / 32GB	4GB / 64GB
<b>Screen (Resolution)</b>	4" WVGA (480 x 800)	4.3" WVGA (480 x 800)
<b>Dimension (mm)</b>	164 x 76 x 26.5	225 x 78 (grip:58) x 37
<b>Weight (g)</b>	340g	410g
<b>Battery</b>	4,000mAh	5,800mAh
<b>Wireless</b>	802.11 a/b/g/n/ac BT 4.2 4G LTE	802.11 a/b/g/n/ac BT 5.0 4G LTE
<b>Camera</b>	Rear : 16MP	
<b>Barcode Scanning</b>	SE965 (1D SR) SE4710 (SR) SE4750 (SR)	SE4710 (SR) SE4750 (SR) SE4850 (XLR)
<b>USB</b>	USB Type-B	USB Type-C
<b>Reliability</b>	IP65 1.8m Drop	IP67 1.8m Drop