

COMPANY PROFILE



JOYFACTORY CO.

Zip Code : 08381

C-510, 70 Dusan-ro, Geumcheon-gu, Seoul, Korea

Tel : +82-2-6952-0351 Fax : +82-2-6952-0355

Cell : +82-10-3302-6217

JOYFACTORY

LIST

1. COMPANY OVERVIEW

2. IMPLEMENTATION RECORDS

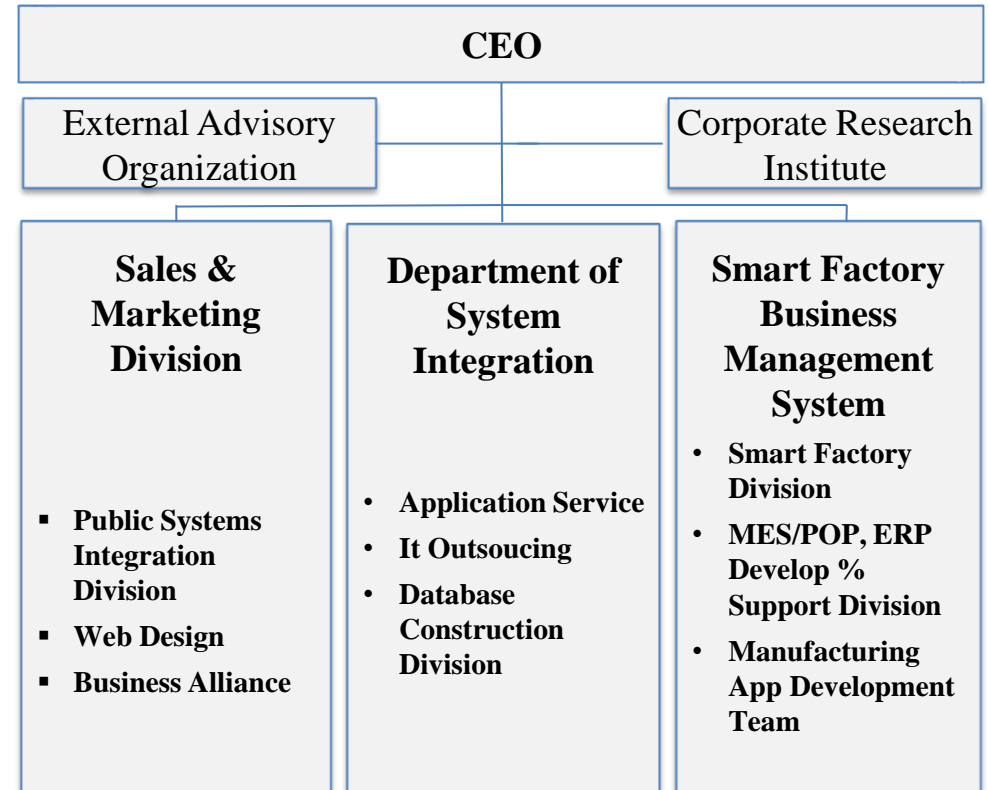
3. SOLUTIONS OVERVIEW

JOYFACTORY Co., Ltd. focuses on one of the core areas of the Fourth Industrial Revolution: the smart factory, leveraging our accumulated IT capabilities and operational know-how.

We have developed and implemented numerous products and projects including ERP, MES/POP, POS systems, and applications. Currently, we provide RT_FACTORY, a smart factory solution designed to optimize the production activities of enterprises, to numerous companies.

Providing high-quality, technology-intensive solutions that satisfy both businesses and people is the ultimate value and goal pursued by Joy Factory Co., Ltd.

• COMPANY	JOYFACTORY Co., Ltd.
• CEQ	Byeong Min, Lee
• Business Areas	<ul style="list-style-type: none"> • Smart Factory (MES/POP) • Information System Software Development • WEB / App • Warehouse Management System (WMS) • Procurement, Production, and Quality Management System (JKTSP) • SI, SM (Order, Membership Management, Logistics, Payment System) • Smart HACCP
• Address	Zip Code : 08381 70 Dusan-ro, Geumcheon-gu, Seoul
• Phone Number	TEL +82-2-6952-0354 FAX. +82-2-6952-0355
• Established Date	November 1, 2016
• Personnel Status	Advanced Expert: 4, Expert: 4, Intermediate: 2, Junior: 3



- 2022.11** Participated in SMATEC2022 Smart Factory Exhibition
- 2022.09** Launched Manufacturing Execution System course at Samsung Electronics Win-Win Cooperation Academy
- 2021.01** Delivered educational solutions to the Korea SMEs and Startups Agency
- 2020.10** Certified as an R&D Center
- 2020.09** Certified as a Venture Business (Korea Technology Finance Corporation)
- 2020.07** Operated Long-Term Advanced Training Program (MES) for employees at the Korea SMEs and Startups Agency
- 2020.01** Delivered educational solutions (RT_FACTORY) to the Korea SMEs and Startups Agency
- 2020.01** Appointed Technical Director of the Supplier Association at Gyeonggi Technopark
- 2020.01** Renamed the company to Joy Factory Co., Ltd.
- 2018.04** Registered as an excellent IT partner with Hanwha Corporation
- 2017.03** Registered as a supplier in the Smart Factory Public-Private Joint Promotion Pool
- 2017.01** Acquired Technology Evaluation Certification from the Korea Technology Finance Corporation
(Certification Number: 20170106733)
- 2016.11** Established the Smart Factory Business Division at JNK Infotech Co., Ltd.

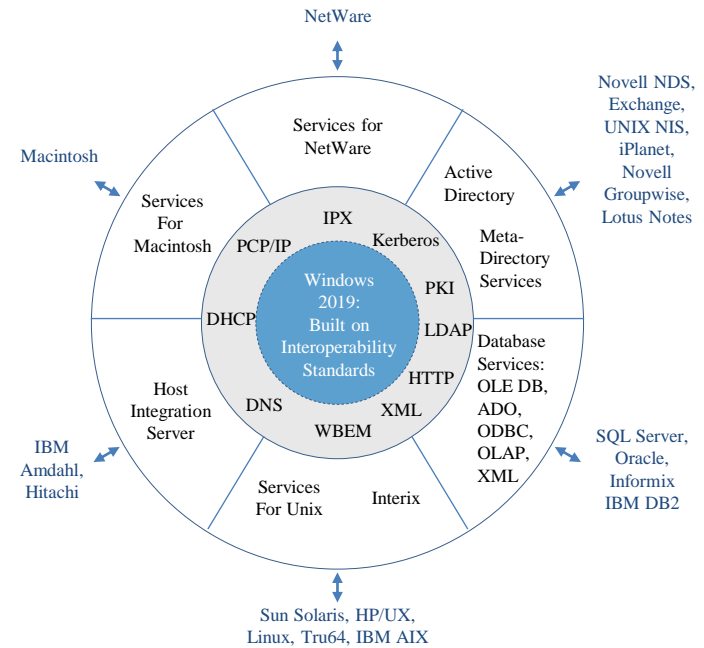
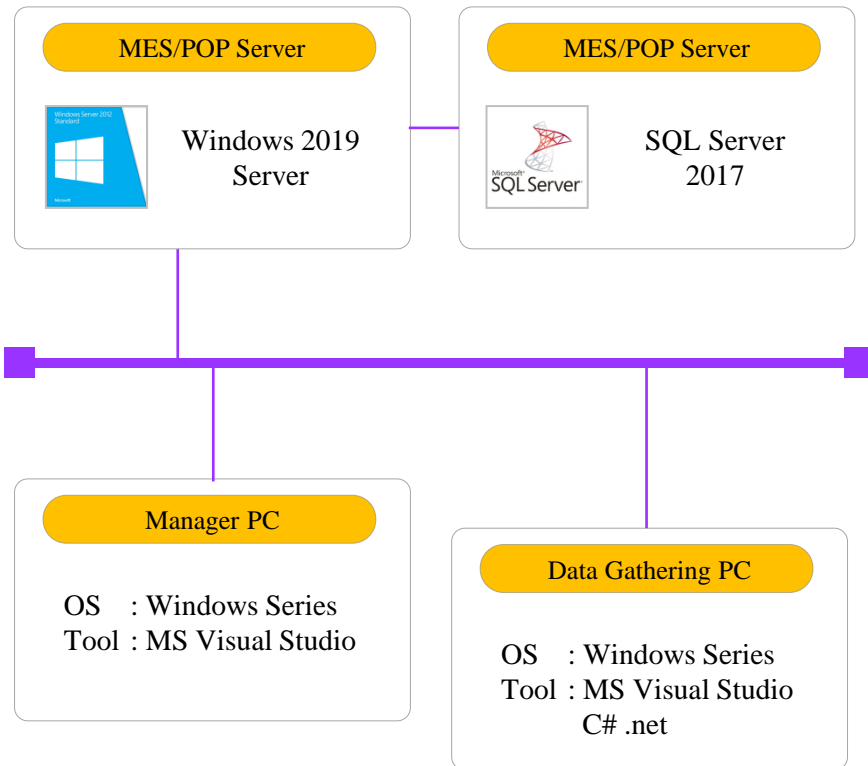
1-3. EXHIBITION (2019 ~ 2023)

New-MES for One-Stop Service



● Software Platform - RT_FACTORY

Software Platform



Software Application Environment

- DBMS : Microsoft SQL Server 2017
- SERVER O/S : Windows 2019 Server
- CLIENT O/S : Windows 10, 11
- MS Visual Studio 2022
- Development Tool : C#.net
VsFlexgrid / chart FX / CrystalReport
- DB Connection : UDB Library
ODBC

- System Management

- User Management
- Permission Management
- Version Management
- Screen Management

- Master Data Management

- Workplace Information
- Factory Information
- Department Information
- Employee Information
- Customer Information
- Item Group Information
- Item Information
- Item-Specific Customer Price Information
- Process Information
- Standard Routing Information
- BOM Management
- Routing Settings
- Process Condition Settings
- Quality Standard Settings
- Process-Wise Workstation Allocation
- Equipment Allocation
- Inventory Location Information
- Quality Standard Information
- Major Defect Classification Information
- Detailed Defect Classification Information
- Major Downtime Classification Information
- Detailed Downtime Classification Information
- Major Downtime Action Classification Information
- Detailed Downtime Action Classification Information
- User-Defined Major Code Classification Information
- User-Defined Detail Code Classification Information

- Sales Management

- Order Registration
- Shipping Plan Inquiry
- Shipping Registration
- Shipping Inquiry
- Product-wise Shipping Status
- Manufacturing Cost by Work Order

- Instrument Management

- Measurement Instrument Management
- Measurement Equipment Status

- Production Planning

- Production Plan Information Registration
- Line-wise Production Plan Establishment
- Line-wise Production Plan Division
- Line-wise Production Plan Inquiry

- Product Management

- Inbound Waiting Registration
- Inbound Waiting History Inquiry
- Inbound Registration
- Inbound Registration History Inquiry
- Monthly Product Inbound Aggregation
- Manual Label Issuance
- Packing Remainder Inquiry

- Project Management

- Project Basic Information
- Project Management
- Project Task Management
- Project Progress Status
- Project Resource Allocation Status
- Project Status Inquiry

- Process Management

- Real-time Process Inventory Status
- LOT Closing/Disposal - Daily Work Report
- Process-wise Defect Status
- Daily Work Report - LOT Closing Cancellation
- Production History by Date
- Workstation-wise Personnel Status
- Daily Item Group Plan vs. Actual Performance
- Process/Item-wise Performance Status
- Individual Daily Production Performance Status
- LOT Disposal Details
- Periodic Report Inquiry
- Work Order Inquiry
- Manufacturing Cost by Work Order

- Traceability Management

- Lot Traceability (Forward Traceability)
- Lot Traceability (Backward Traceability)
- Input Material History

- Facility Management

- Equipment Registration
- Equipment Inspection Settings
- Equipment Inspection Registration
- Downtime Action Registration and Inquiry
- Daily Equipment Downtime Status
- Equipment-wise Performance Status
- Equipment-wise Operation Status
- Line-wise Downtime Status
- Equipment-wise Defect Status
- Mold Registration
- Mold Condition Monitoring
- Mold-wise Production History
- Mold Repair Request Registration
- Mold Repair Request Reception
- Mold Repair Completion Registration
- Mold Repair Status Inquiry
- Mold Preservation History Inquiry
- Mold Transfer

- Quality Management

- Process-wise Defect Status
- Item-wise Defect Status
- Item Group-wise Defect Status
- Defect Type Aggregation
- Monthly and Quarterly Defect Analysis
- Daily Defect Variation
- Defect Item Occupancy Rate
- Monthly Item Group-wise Direct Pass Rate Status
- Process-wise Defect Item Occupancy Rate
- Quality Standard Run Chart
- Quality Standard Xbar-R Control Chart
- Quality Standard Cp/Cpk/Mean/Deviation
- Quality Standard Histogram

- Monitoring

- Production Status
- Sales Department Monitoring
- Production Department Monitoring
- Production and Delivery Status
- Daily Order Status

- Material Management

- Goods Receipt Registration
- Material Import Inspection
- Import Inspection Completion Status Inquiry
- Stock Receipt Registration
- Stock Receipt History Inquiry
- Work-in-Progress Inventory by Warehouse
- Manual Label Issuance
- Work-in-Progress Material Dispatch Registration
- Inventory Status by Rack

- Purchase Management

- Establishing Order Plan
- Material Requirements Planning (MRP)
- Purchase Request Registration
- Order Registration
- Order Status Inquiry
- Received/Unreceived Status Inquiry
- Arbitrary Order Registration

- Outsourcing Management

- Outsourcing Purchase Order Registration
- Outsourcing Dispatch Registration
- Outsourcing Receipt Registration
- Outsourcing Inventory Status

- On-Site Management

- Operator Registration
- Downtime Registration
- Production Status
- Defect Registration
- Quality Inspection Registration
- Work Start Registration
- Process Condition Inspection Registration
- Material Input
- Equipment Inspection
- Mold Installation
- Monitoring Screen

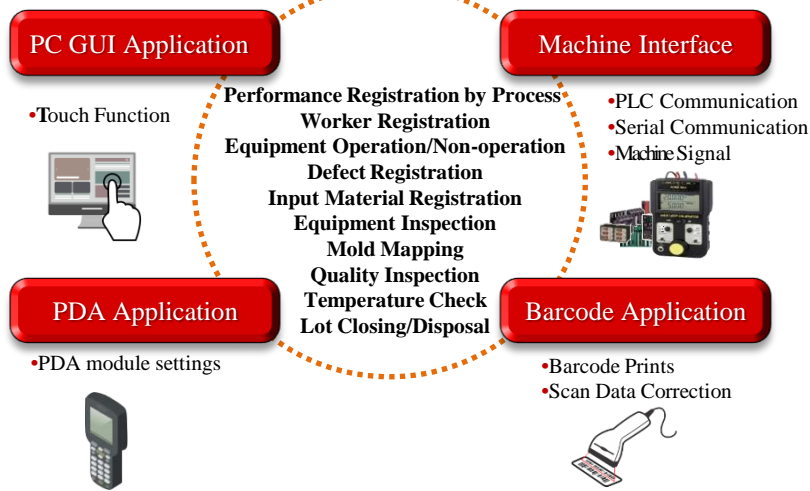


● PRODUCT OVERVIEW

RT_Control is a POP system for efficient production and facility management by automatically aggregating and analyzing production site information from product input to completion at the manufacturing site using a computer and various automated equipment. RT_Control is a functional configuration and data capture method differ depending on the nature of the construction system.

Features of RT_Control

- Real-time collection of production site information, conversion to higher systems, and linkage
- Configuring a machine that has a Dependent on a parent machine
- Data capture with PC GUI, Barcode, PDA Application and facility interface module
- Minimize input by introducing and applying automation equipment
- Quickly and accurately capture data





JOYFACTORY
THANK YOU.

JOYFACTORY CO.

Zip Code : 08381

C-510, 70 Dusan-ro, Geumcheon-gu, Seoul, Korea

Tel : +82-2-6952-0351 Fax : +82-2-6952-0355

Cell : +82-10-3302-6217

JOYFACTORY