




ERP/MES System construction specialist company

EMAX Hi-Tech Co., Ltd

2024year Company profile

Frame7^{v30}

I . Company introduction

- 
- 01 Company overview
 - 02 Organization and Personnel status
 - 03 Sales status
 - 04 Business direction
 - 05 Construction performance

1. Company overview

I. Company introduction

- EMAX Is Open Solution Professional company was established with the goal, Based on Korea's best development platform Specialization in various industries ERP and MES We develop and supply systems and expansion modules..

Korea's first **Open Solution ERP/MES specialized company**

Best in Korea **Companies with development platforms**

Best in Korea **Win-Back Specialty ERP Enterprise**



www.emaxit.co.kr
www.emaxht.co.kr
www.smartwh.co.kr



2008

- Establishment of corporation
- Frame7 Development
- Open Solution ERP marketing deployment



2012

- Frame7 2.0 Development
- Frame7 Obtained a patent
- Automotive Parts Industry Informatization Forum "Auto IT Forum" establish



2014

- Accounting/Advancement of personnel system
- Development of competency performance evaluation system
- Groupware development
- Gyeonggi Branch Co., Ltd. Emax Hitech establish



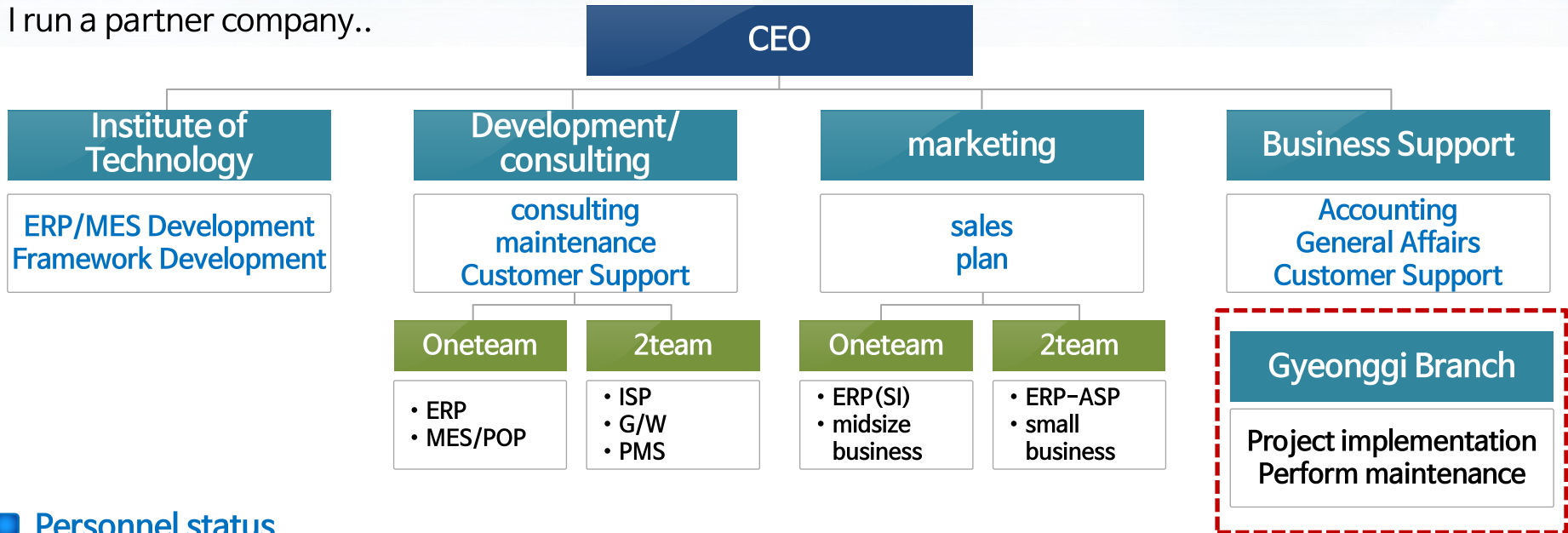
2016

- Frame7 3.0 Development
- JAVA Personnel salary development
- Corporate Informatization Solution Cooperative "Solution Club" establish
- MES solution development

2. Organization and Personnel status

I. Company introduction

- EMAX The organization is a technology research institute., Development.consulting,marketing,Management Support Department, etc.4 It is organized into 10 departments., 8Dog Governor12Dog specialized solutions I run a partner company..



Personnel status

By field	total	bailiwick			
		Special engineer	Advanced technician	Intermediate technician	beginner technician
Emax Co., Ltd (head office/laboratory)	71	12	19	27	13
Emax Hi-Tech Co., Ltd (Gyeonggi Branch)	12	5	4	2	One
sum	83	17	23	29	14

4. Business direction

I. Company introduction

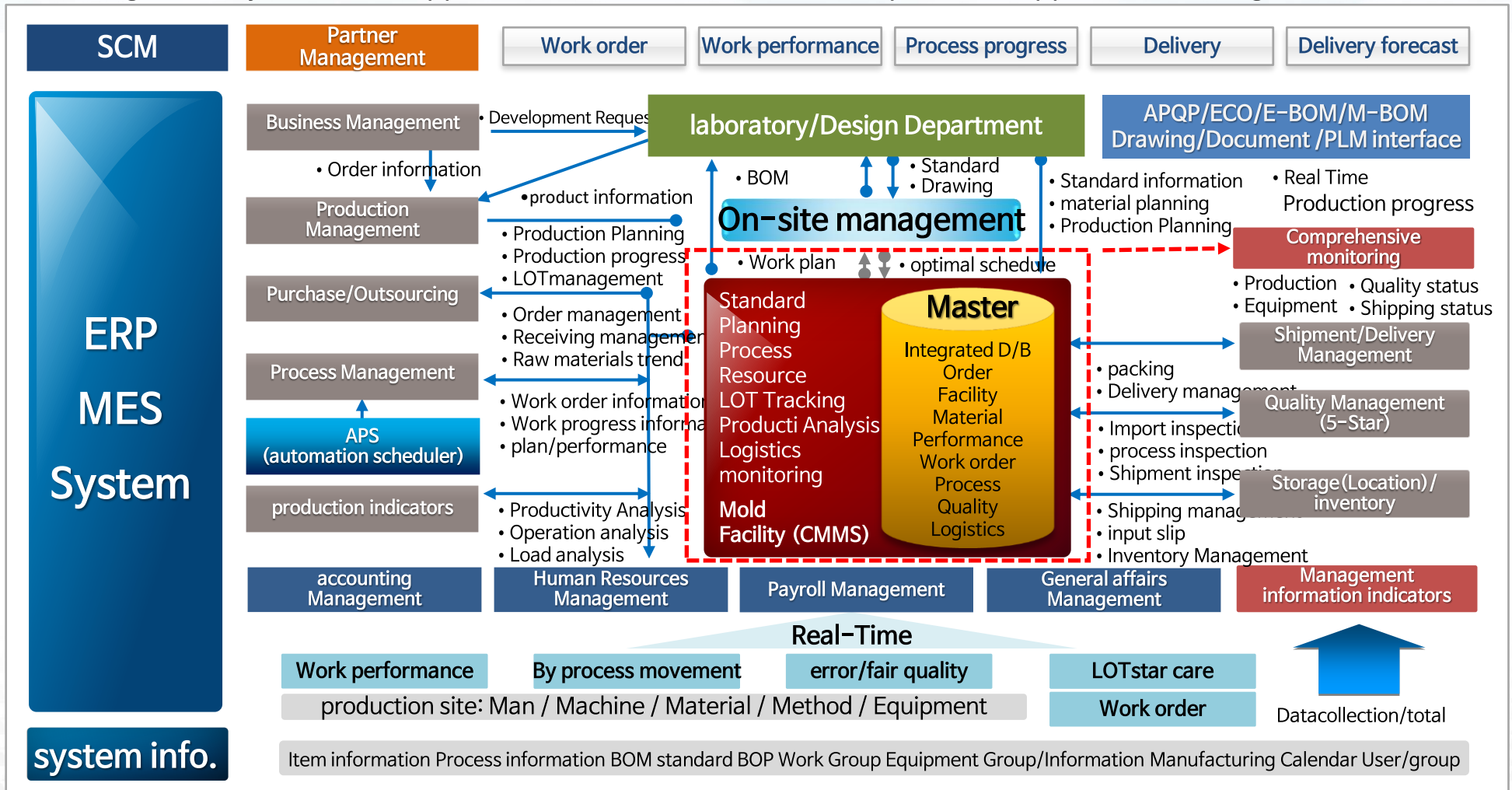
- By service ERP Expand around your product ERP We have developed and have our own system., Various solutions With partners We cooperate based on interconnection between solutions.



4.1 Business direction-ERP

I. Company introduction

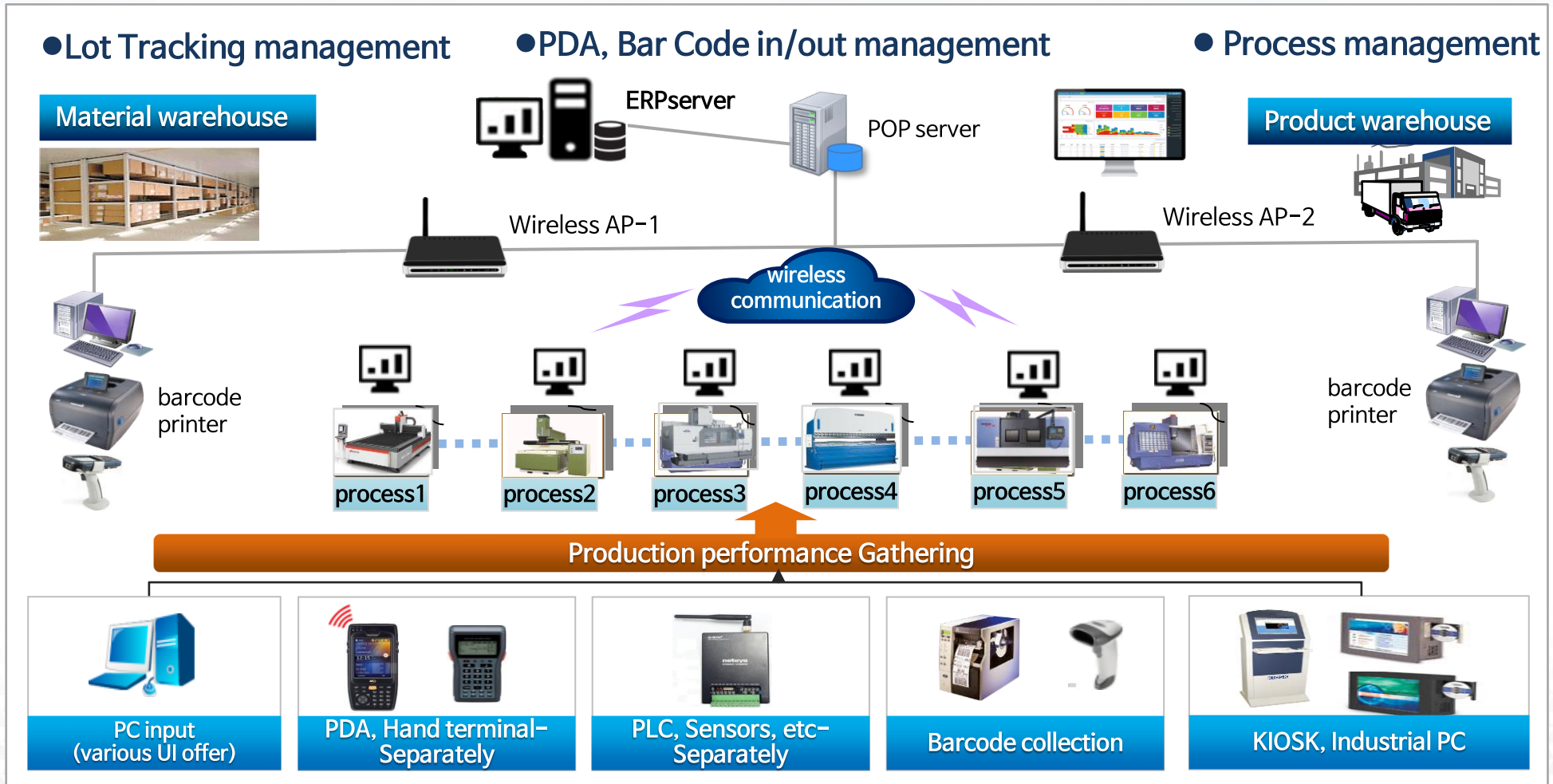
- Accounting, greeting, Management tasks such as general affairs and MTO, MTS Based on a production management system that supports all QMS, APQP, CMMS, floor plan. We support a wide range of advanced



4.2 Business direction-MES

I. Company introduction

- It provides a basic system for tracking production LOT with its own MES solution function, provides PDA management and process performance Data Gathering in materials and product warehouses, and plays a leading role in building smart factory systems.



5. Major Construction performance

I. Company introduction

- EMAX It is specialized for global companies with annual sales exceeding trillion won and companies with multiple business sites in various industries. ERP We have supplied the system, advanced accounting, personnel system manufacturing, finance, Agency, We have continued to supply to companies in the service industry..



2008

- Taesan Co., Ltd.LCD
- Co., Ltd.Nifco Korea

2009

- Co., Ltd.Seongwoo Hitech
- Genfix International Co. Ltd.

2010

- Hwajin Co., Ltd.
- Changshin Co., Ltd.
- Korens Co., Ltd.

2011

- IS Dongseo Co., Ltd.
- Hansae Industry Co., Ltd.
- Neotech Co., Ltd.

2012

- Ajin Industry Co., Ltd.
- Interojo Co., Ltd.
- yes24Co., Ltd.
- Optoelectronics Co., Ltd. affiliates
- ACS Co., Ltd.

2013

- Kou Co., Ltd.
- Dool Co., Ltd.
- Samwoo Enterprise Co., Ltd.
- Emtech Co., Ltd.
- Hanil Forging Industry Co., Ltd.

2014

- Sungjin Former Co., Ltd.
- Mitsubishi Elevator Co., Ltd.
- Pacific Products Co., Ltd.
- Co., Ltd.NUCformer
- Co., Ltd.K.G.Mobilians

2015

- Co., Ltd.Hanyoung Nux
- Daewoo LogisticsCo., Ltd.
- Co., Ltd.Shingi Intermobile
- Co., Ltd.Dezen

2016

- Daenong Co., Ltd.
- Korea Pharmaceutical Import and Export Association
- Hanyoung Accounting Corporation
- Co., Ltd.Cesco

group company



Multiple workplaces



Accounting/greeting



5.1 Construction case

I. Company introduction

- EMAX Is KODAQ/KOSPI for companies ERP We have a track record of delivery, Especially domestic major Package and foreign products ERP large number of users Win-Back We have many achievements.



 KOSPI - 1 trillion 200 billion	 KOSPI - 500 billion	 KOSDAQ - 40 billion	 KOSDAQ - 3 trillion 200 billion
 KOSPI - 1 trillion 200 billion	 KOSDAQ - 100 billion	 KOSDAQ - 700 billion	 KOSDAQ - 200 billion
 KOSDAQ - 50 billion	 KOSPI - 1 trillion	 KOSDAQ - 700 billion	 KOSDAQ - 170 billion

 500 billion	 170 billion	 150 billion	 110 billion
 130 billion	 600 billion	 260 billion	 40 billion
 170 billion	 50 billion	 50 billion	 35 billion
 1 trillion	 200 billion	 80 billion	 20 billion
 50 billion	 50 billion	 400 billion	 700 billion

5.2 Construction performance

I. Company introduction

Up to now 60 We have established a smart factory system in several small and medium-sized businesses, special car, chemistry, metal, electrical/electronic, bio light in various industries Have knowledge and experience Through successful construction and use, Playing a leading role as a pilot factory and tour company.

공급기업 수행 실적			
참여기업명	과제수행 기간	금액	사업 내용
월드비엠씨㈜	2022-11-03~2023-05-02	114,130,000	MES 시스템
㈜대현 인천사업장	2022-10-26~2023-04-25	112,740,000	MES 시스템
㈜우정하이테크	2022-09-15~2023-06-15	170,350,000	MES 시스템
㈜원일산업	2022-07-18~2023-06-17	195,450,000	MES 시스템
㈜카인드아크코리아	2022-07-18~2023-04-17	406,133,000	MES 시스템
㈜대현 김포사업장	2022-01-07~2022-10-06	588,166,000	MES 시스템
㈜한길에스브이	2021-12-14~2022-06-13	149,952,000	MES 시스템
㈜에이치티비전	2021-10-26~2022-04-25	140,771,000	MES 시스템
㈜카인드아크코리아	2021-08-26~2022-02-21	137,527,000	MES 시스템
㈜중부바이오텍	2020-11-15~2021-05-04	193,682,000	MES 시스템
㈜류코	2020-11-40~2021-05-03	174,860,000	MES 시스템
㈜대현 김포사업장(기초)	2020-07-20~2021-02-25	205,000,000	MES 시스템
㈜정현이엔지	2020-06-29~2021-02-26	207,808,000	MES 시스템
㈜비엔비컴퍼니	2020-06-22~2021-03-21	204,721,000	MES 시스템
㈜동양에이케이코리아	2018-09-06~2019-05-06	660,000,000	ERP, MES, 사물인터넷
㈜성우스타게이트	2018-08-01~2018-11-30	110,000,000	ERP 시스템
㈜대명아이넥스	2018-07-20~2018-11-30	110,000,000	ERP 시스템
인텍텔레콤	2018-07-20~2018-11-30	100,000,000	ERP 시스템
㈜우정하이테크	2017-09-20~2017-12-15	110,000,000	ERP 시스템
㈜세영화학	2016-09-23~2016-12-31	211,860,000	ERP 시스템
㈜피에스피 (부산사료)	2016-09-23~2016-12-31	147,840,000	ERP 시스템
㈜한국특장	2016-09-23~2016-12-31	201,160,000	ERP 시스템

